

LED Downlight Installation Instructions

TPDL1C2
TPDL1C2B10



Product range

| Cat No. | Configuration |
|------------|---|
| TPDL1C2 | LED Downlight, 700 lm, Colour Selectable (3000K-4000K-6000K), White Trim |
| TPDL1C2B10 | LED Downlight, 700 lm, Colour Selectable (3000K-4000K-6000K), White Trim, 10 pack |

Available accessories

| | |
|-----------|--|
| TPDL1T2BC | Brushed Chrome Trim to suit TPDL1C2 Series |
| TPDL1T2BK | Black Trim to suit TPDL1C2 Series |

For your safety

⚠️ DANGER

HAZARD OF ELECTRIC SHOCK

- This product must be installed and serviced by appropriately qualified and/or licenced electrical personnel.
- Isolate the electrical supply before doing any work on this product.
- Ensure that the product has been correctly installed and tested for safe operation before reconnecting the electrical supply.
- To comply with all safety standards, the product must be used only for the purpose described in this instruction and must be installed in accordance with the wiring rules and regulation in the location where it is installed.

Failure to follow these instructions will result in death or serious injury.

⚠️ CAUTION

RISK OF BURN INJURIES

During and after use, the product may be hot. Do not touch the product before it has completely cooled down.

Failure to follow these instructions can result in minor injuries, or equipment damage.

Installation requirements

- The product is class 2.
- Check whether the product has been damaged during transport. Do not operate/install any product which appears damaged in any way. Return the complete downlight to place of purchase for inspection, repair or replacement.
- Take care not to pull any electrical wires during unpacking as this may damage the connection.
- Isolate the electrical supply before commencing any installation.
- There are no user serviceable parts inside.

Dimming

This downlight has been designed to achieve deep dimming performance which allows very low levels of light output to provide the perfect atmosphere for all occasions. This downlight is designed to work with Clipsal LED dimming technology. Please refer to Clipsal.com/load for the latest dimming compatibility information.

Note: In some regions of the country a slight flicker may be experienced when the luminaire is dimmed. This is due to power line signals sent by the electricity supply authorities to assist with switching utilities, for example hot water services or changing tariff rates. This effect is not a malfunction of the luminaire or dimmer but a result of local installation conditions changing during the day. If this occurs, adjusting the dimmer back to maximum brightness will help minimize flickering.

C-Bus® Compatibility

This downlight has not been designed to work with the following C-Bus® dimmer models or ranges.

- C-Bus Din Rail Dimmer Models
 - L5504D2A, L5504D2AP
 - L5504D2U, L5504D2UP
 - L5508D1A, L5508D1AP
- C-Bus Wall Mount Dimmer Models
 - 5104D750, 5104D400

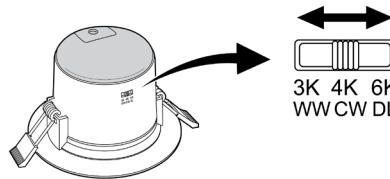
All Professional Range leading edge Dimmers.

Pre-Installation

Colour Temperature Selector

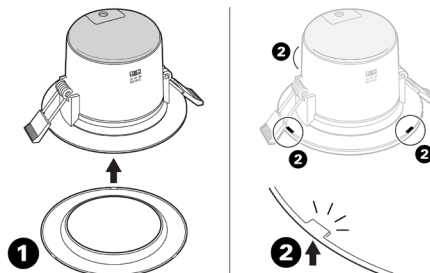
This downlight has a Tri-Temp colour selector switch allowing the options of 3 different light temperature outputs. Select the desired position prior to installation.

| 3000K | 4000K | 6000K |
|------------|------------|-----------|
| Warm White | Cool White | Day Light |



Clip on Trims

- 1 Remove brushed chrome or black trim from packaging.
- 2 Press trim over the top of existing white trim prior to installation.



Installation instructions

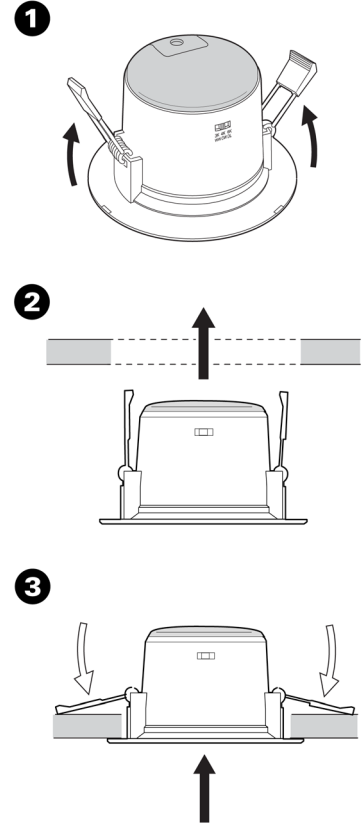
Note: Make sure colour temperature is selected and trim is fitted as above prior to installation.

Preparation and connection

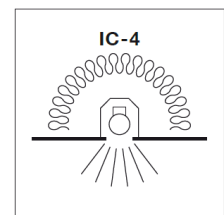
- 1 Isolate power.
- 2 Select suitable location for installation and cut out.
- 3 Connect mains supply to downlight.

Mounting the downlight

- 1 Fold back mounting springs.
- 2 Insert downlight into cut-out.
- 3 Ease upwards until sitting flush with ceiling.

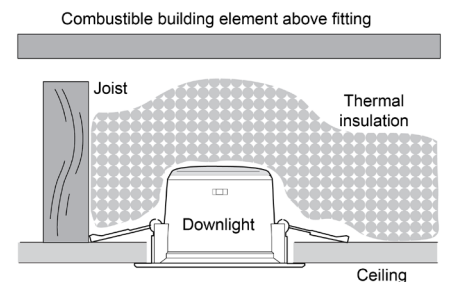


Clearances



This downlight has achieved an IC-4 classification and complies with AS/NZS 60598.2.2. It is classified as an IC-4 recessed luminaire that can be abutted against normally flammable materials, including building insulation, and can be covered in normal use.

This type of recessed luminaire is effectively a sealed unit that has restricted flow of air between the habitable room and the luminaire.



Risk of Fire - Required clearance from structural members and building elements: **SCB** = 0 mm, **HCB** = 0 mm.

SCB – Side Clearance to Building element

Minimum distance between the side of the recessed luminaire and any building element.

HCB – Height Clearance to Building element

Minimum distance between the top of the recessed luminaire and any building element above it.

Schneider Electric reserves the right to change specifications, modify designs and discontinue items without incurring obligation and whilst every effort is made to ensure that descriptions, specifications and other information in this instruction is correct, no warranty is given in respect thereof and the company shall not be liable for any error therein.

© Schneider Electric 2019

This material is copyright under Australian, New Zealand and international laws. Except as permitted under the relevant law, no part of this work may be reproduced by any process without prior written permission of and acknowledgement to Schneider Electric.

GDE3379600_00

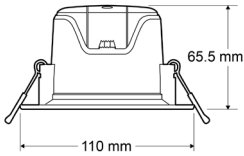
August 2019

Product specifications

| Parameter | TPDL1C2 |
|---------------------------------|-----------------------------------|
| Voltage Rating | 240 V a.c., 50 Hz |
| IP Rating | IP44 (from front only) |
| Total Power Consumption | 9 W |
| Beam Angle | 90 degrees |
| CRI | > 80 |
| Colour Temperature (selectable) | 3000K, 4000K or 6000K |
| Lumens | > 700 lm |
| LED Lamp Life (L70) | 50,000 hrs |
| Run Current (@230V) | @230V: 0.041A |
| Inrush Current | 3.89A |
| Inrush Current Duration | 20 µs |
| Earth Leakage Current | < 0.1 mA |
| Operating Temperature | - 10 °C to + 25 °C |
| Operating Humidity | + 10% to + 95% RH, non-condensing |
| Storage Temperature | 0 °C to + 60 °C |
| Storage Humidity | + 10% to + 95% RH, non-condensing |
| Weight (grams) | 0.25 kg |
| Installation | Flex & Plug |
| Trims (sold separately) | TPDL1T2BC (Brushed Chrome) |
| | TPDL1T2BK (Black) |

Specifications typical at 25°C

Cutout: Ø 92 mm



Customer care

Warranty information (Australia)

We warrant this product for 3 years—visit <https://www.schneider-electric.com.au/en/about-us/legal/terms-and-conditions.jsp> for details.

Our goods also come with guarantees that cannot be excluded under the Australian Consumer Law. You are entitled to a replacement or refund for a major failure and compensation for any other reasonably foreseeable loss or damage. You are also entitled to have the goods repaired or replaced if the goods fail to be of acceptable quality and the failure does not amount to a major failure.

Warranty information (New Zealand)

We warrant this product for 3 years—visit <https://www.schneider-electric.co.nz/en/about-us/legal/terms-and-conditions.jsp> for details.

Schneider Electric (Australia) Pty Ltd

Customer Care: 13 73 28
 33-37 Port Wakefield Road, Gepps Cross SA 5094
 Email: customer-care.au@schneider-electric.com
www.schneider-electric.com.au

Schneider Electric (NZ) Ltd

Customer Care: 0800 652 999
 Building 6, 60 Highbrook Drive, East Tamaki, 2013, New Zealand
 Email: sales@nz.schneider-electric.com
www.schneider-electric.com