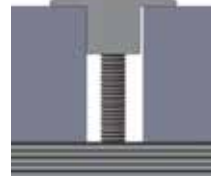


## Inter and End Clamp Standard 35 and 40 mm

### - Assembly -



Fixing the framed panel with End Clamp



Fixing the framed panel with Inter Clamp

### - Component -



End Clamp

**Part No.: ER-EC-ST35, ER-EC-ST40**



Inter Clamp

**Part No.: ER-IC-ST35, ER-IC-ST40**

### - Technical Specification -

<b>Application</b>	ER-EC-ST35 is for framed PV Modules of 35-37mm in height(with ECO-Rail and T-Rail) ER-EC-ST40 is for framed PV Modules of 40-42mm in height(with ECO-Rail and T-Rail) ER-IC-ST35 is for framed PV Modules of 29-36mm (with ECO-Rail) /31-36mm(with T-Rail) in height ER-IC-ST40 is for framed PV Modules of 34-41mm (with ECO-Rail)/36-41mm(with T-Rail) in height
<b>Requirement</b>	ER-EC-ST needs 20mm space on each side of the Rail ER-IC-ST needs 18mm space between PV Modules
<b>Recommended Torque</b>	16-20N•m
<b>Weight</b>	ER-EC-ST35: 0.054 Kg; ER-EC-ST40: 0.057 Kg ER-IC-ST35: 0.072Kg; ER-IC-ST40: 0.077 Kg
<b>Packaging</b>	ER-EC-ST: 100 units per pack, 4 packs (400 units) per carton ER-IC-ST: 100 units per pack, 4 packs (400 units) per carton
<b>Material</b>	Main Structure: AL6005-T5 Fasteners: SUS 304
<b>Color</b>	Silver (anodized, no less than 10 μm)
<b>Standard</b>	AS NZS1170.2-2011

